

# MUC.only M Quick start guide



⚠ Respect the safety guidelines in the manual! ⚡

## 1. M-Bus:

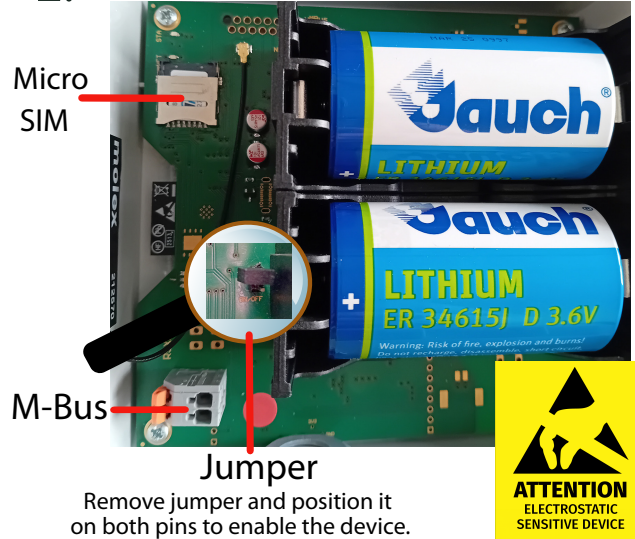


Insert a flathead screwdriver (blade width approx. 3 mm) into the recess of the latch on the bottom.

Carefully release the latch. Once unlatched, the lid can be opened towards the top side of the device.

To close, press the latch manually.

## 2.



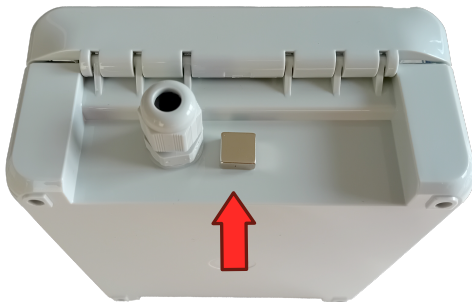
Micro SIM

M-Bus

Jumper

Remove jumper and position it on both pins to enable the device.

## 3. WLAN is off by default. Activation is required for configuration.

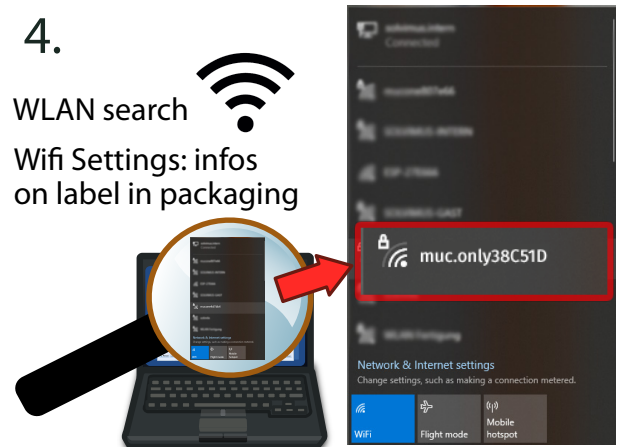


Please hold a magnet in this position for activation until the green and yellow LED turn on.

## 4.

WLAN search

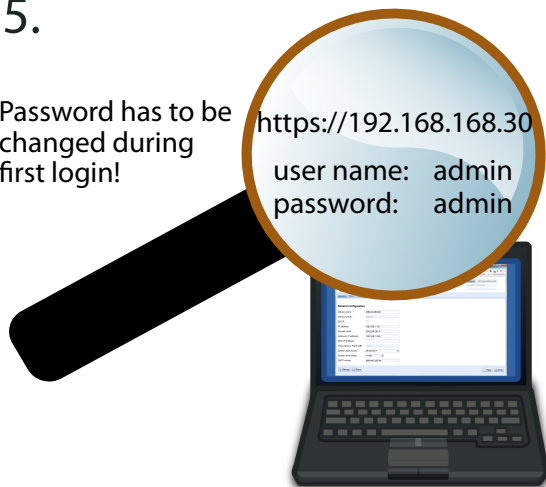
Wifi Settings: infos on label in packaging



## 5.

Password has to be changed during first login!

<https://192.168.168.30>  
user name: admin  
password: admin



## 6.



When purchasing the solvimus catalogue items, the customer is obliged to read the product manuals which are available for download on the solvimus homepage.



**Do you have questions or need support?**

Our support team is here for you:  
+49 3677 7613065  
support@solvimus.de

Hereby, solvimus GmbH declares that the radio equipment type MUC.only M is in compliance with Directive 2014/53/EU. The full text of the EU declaration of conformity is available at the following internet address: [www.solvimus.de/en/homepage/](http://www.solvimus.de/en/homepage/)