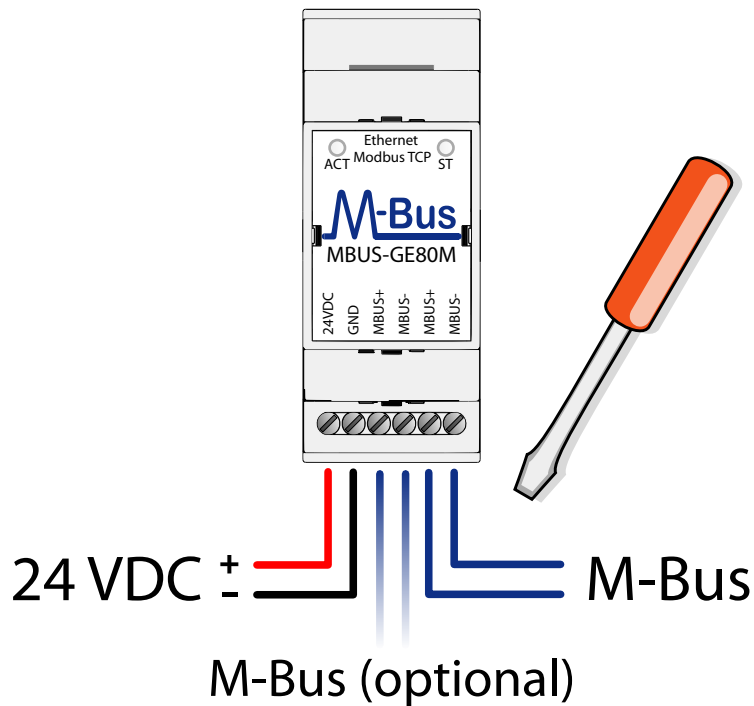


MBUS-GE20/80M Quick start guide

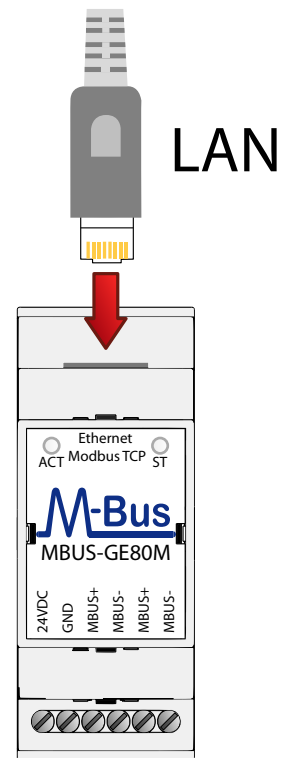


 Respect the safety guidelines in the manual! 

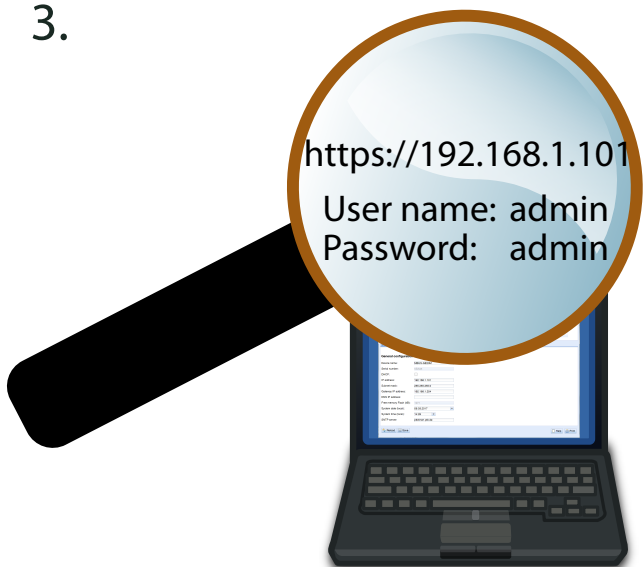
1.



2.



3.



IP address: 192.168.1.101
Subnet mask: 255.255.255.0
Gateway: 192.168.1.254

Use our **Netdiscover Tool**.

Download here:

www.solvimus.de/en/products/downloads/
under category "software"!

4.



When purchasing the solvimus catalogue items, the customer is obliged to read the product manuals which are available for download on the solvimus homepage.

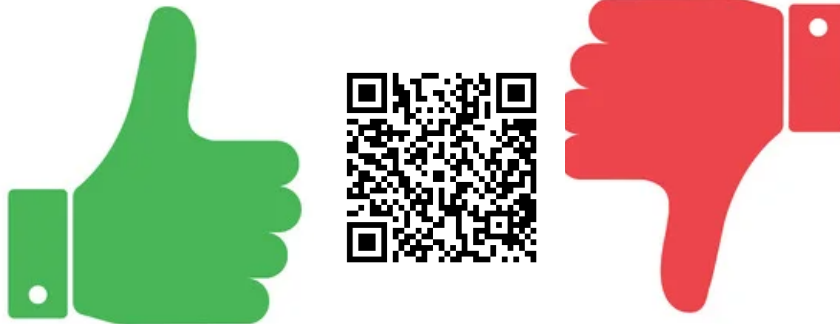


Do you have questions or need support?

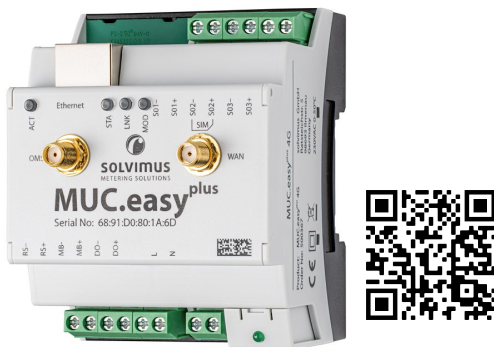
Our support team is here for you:
+49 3677 7613065
support@solvimus.de

Do we have your feedback already?

We are delighted to get your feedback on our Modbus gateways.



Do you know already ...?



... our data concentrator MUC.easy^{plus}?

It addresses all common standards thanks to the large variety of interfaces. The data can be stored in the 4 GB storage are transmitted independently to up to 10 different systems.



... our BACnet gateways?

These are ideally suited for the reading of instantaneous values in building management systems. Up to 500 unit loads can be operated directly. The values are provided as BACnet variables.